



Weekly Newsletter

Your weekly newsletter about our school!

If it is to be, it is up to me

Dear parents and carers,

Welcoming a New Face

I am absolutely delighted to announce that Miss Green will be joining our school community from Monday 11th May! She will be taking on a new role within our administration team in the main office. I am sure you will join us in giving her a warm Grove Lea welcome.

Year 4 Tennis at Aspire

We also want to shine a massive spotlight on our Year 4 students this week. They spent a brilliant afternoon at the park for the Aspire Tennis Event.

It was wonderful to see the children working so hard on their tennis skills in the sunshine. What impressed us the most, however, was their attitude. The children were absolutely fantastic, showing great resilience and determination. A huge well done to Year 4 for representing our school so beautifully and thank you to staff for supporting this event.

Gymnastics Event

We were proud to host and lead the second session of the KS1 gymnastics event this week. Year 1 and 2 children joined together from additional schools across the Trust to showcase their skills and talents. Thank you to all of our KS2 children who supported this event as mentors. You were fantastic role models and it was wonderful to see you supporting groups of children from across our 9 schools.

Thank you all for your continued support. We hope you have a lovely weekend!

Best wishes,
Mrs Wilson

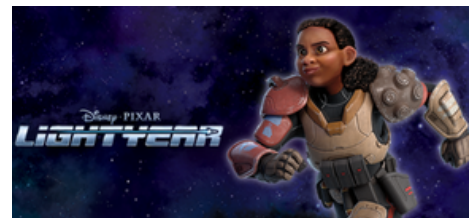
This weeks 'Active 5'



Can you try this activity at home for 5 minutes..

<https://www.nhs.uk/healthier-families/activities/10-minute-shake-up/lightyear/izzys-super-space-race/>

Please send in photos to your class teacher to be awarded dojs.



Wellbeing Weekly

Please see the inks below for support and advice which we hope you may find interesting/useful:

- Cedars Family Hub in Hemsworth offer all different kinds of resources and services to help families thrive:
https://www.facebook.com/CedarsFamilyHub/?locale=en_GB
- Fun digital therapy for childhood anxiety
<https://luminova.app/>
- The Food Pantry also has a facebook page:
<https://hemsworthfoodpantry.org.uk/>
- An online resource for children and young people in Wakefield WF-I-CAN: <https://wf-i-can.co.uk/>
- NSPCC www.nspcc.org.uk/advice-for-families/?utm_old=supportparents
- Growing Healthy 0-18 support available for parents and schools: hdftchildrenshealthservice.co.uk

Attendance

Summer Term

The whole school attendance for this week 96%

Reception	94%
Year 1	95%
Year 2	95%
Year 3	95%
Year 4	93%
Year 5	98%
Year 6	100%

Excellent Attendance is 97% and above.
Well done to year 4 and 5!

Word of the week: Collaboration



Visit our Website

www.grovelea.ipmat.co.uk



Upcoming Dates:

If it is to be, it is up to me

Reminders for parents (please see dojo for further details)

Assessments - It is extremely important your child is present on these days. They will be marked as ungraded if absent or on holiday during this time

Y1 Phonics Week commencing the 8th June

KS1 SATs are optional – the school will be assessing children throughout June

Y4 Multiplication Check Week commencing the 8th June

KS2 (Y6) SATs begin Monday 11th May- Thursday 14th May

Transition meetings for parents. These will all start at 4pm:

Nursery Children moving to Full time Reception	Monday 15 th June
Reception moving to Year 1	Monday 22 nd June
Year 2 moving to Year 3	Monday 29 th June
Transition Day- Y6 to Hemsworth High School and children in school moving to next class for the day	TBC

Concerts:

Summer Production Y6	Friday 17 th July at 2.00pm (Leavers disco will also be this date)
----------------------	--

Sports Days (Weather dependent):

EYFS	Monday 20 th July 9.30am Reception 10.30am Morning Nursery 2.00 pm Afternoon Nursery
KS2	Tuesday 21 st July at 9.30am
KS1	Tuesday 21 st July at 2.00pm

PE Days Summer Term

Monday	Tuesday	Wednesday	Thursday	Friday
Year 1 Year 2 Year 5	Year 3 Year 6	Reception Year 5 Year 6	Nursery Year 4	Year 1 Year 2 Year 4 swimming Year 3

Please note that Nursery and Reception children do not require a PE kit for their sessions



TUCK SHOP FRIDAY

Our tuck shop is open in the hall from 3:20pm on Friday.
There will be sweets, crisps, popcorn and drinks available. All 50p each.





Wider Achievements

If it is to be, it is up to me



Isabelle would like to share that her football team won the West Riding Girls football shield final this weekend.

Congratulations Isabelle and team!



Well done freddie on achieving your Octopus 1 badge!



Congratulations to Elizabeth who passed stage 3 at swimming.

Well done!



SEND Maths

Parent Workshop

All are welcome to attend our planned sessions to work alongside our SENDCO to support you with all SEND related queries.

All hosted in Grove Lea Primary School

INFORMATON



Tuesday 19th May 2026 at 2pm

Come and look at the different ways that you can support your child to access early math skills at home and different ways that you can engage them to apply their knowledge of number, shape and measures.

Use this opportunity to come and work with your child and complete a range of activities together. Refreshments will be provided on entry.